



EDEN LEISURE
FOUNDATION

IN MEMORY OF CETTINA AND MAURICE DE CESARE

invites you to the:

Stardust Gala

FUNDRAISING DINNER IN AID OF INSPIRE

26.10.2024 • 7:30PM • INTERCONTINENTAL MALTA

Dress code: Black Tie

For its inaugural event, the Eden Leisure Foundation is hosting a special evening, filled with divine food, excellent wines, music, entertainment and more.

All proceeds of this event will go to Inspire Foundation's new 'Pathfinder' Project.

We're grateful for any contribution you can make.

TICKET PRICE:

€100 – INDIVIDUALS
€1500 – CORPORATE TABLES (10 PAX)



About the Eden Leisure Foundation:

ITS MISSION

- *The advancement of culture, arts and national heritage.*
- *The advancement of environmental protection, sustainability and improvement, including the protection of animals.*
- *Social and community advancement and outreach.*

The establishment of the Foundation marks a strategic enhancement of the already well-established philanthropic endeavours of the Eden Leisure Group. Serving as a dedicated advisory entity, the Foundation ensures a structured and sustained commitment to community and environmental initiatives.

Functioning as the steward of the philanthropic arm, the Foundation takes charge of overseeing diverse heritage projects in Malta. It manages a dedicated annual financial allocation provided by the Eden Leisure Group, reinforcing the group's commitment to preserving and promoting cultural heritage.

In addition to financial support, the Foundation actively engages with the community and environmental causes through well-organised fundraising activities and events. By coordinating volunteer efforts and leveraging the group's resources, the Foundation extends meaningful assistance. Utilising the diverse communication channels available to the Eden Leisure Group, the Foundation spearheads educational campaigns, spreading awareness across the Maltese Islands.

The overarching goal is to cultivate the growth of Corporate Social Responsibility functions, thereby amplifying the Foundation's impact. Through strategic expansion and increased engagement, the Foundation aims to make a lasting and positive contribution to both the local community and the broader environmental landscape.

To maximise its impact, the foundation has selected a number of Voluntary Organisations to partner with in 2024, all of which fall under its 'pillars'. The Inspire Foundation falls under the community pillar as it offers invaluable services to society.

This event will be the first sizeable fundraising event organised by The Eden Leisure Foundation.

About Inspire Foundation:

The foundation draws on over 40 years of experience in educational, therapeutic, social and recreational needs of persons with disabilities. It specialises in aiding those on the autism spectrum, having profound multiple learning difficulties and those with challenging behaviour.

Inspire has developed several services that offer a range of support to help children achieve and maximise their potential. These activities require much funding.

More information can be found here www.inspire.org.mt

The project:

This event is being organised to support the refurbishment of a dedicated area to be utilised as a professional and welcoming area for the PATHFINDER services.

PATHFINDER is a new service being offered by Inspire Foundation

Pathfinder provides professional advice and support to individuals and their families with or without a diagnosis. It is the main point of reference for individuals/parents of children with behaviour difficulties, ASD, or who have concerns and doubts that their child may be neurodivergent.

It provides direction and assistance to all prospective and current service users and their families, by carrying out assessments, providing timely reports, followed by directions to the right intervention or further consultations, as needed.

This initiative aims to create safe and nurturing environments for individuals with a disability and their families who are seeking Inspire Foundation's essential services and support.

The proposed clinics and office spaces will be designed to foster trust, communication, and collaboration, ensuring successful outcomes for all service users.

To bring this vision to life, we seek your generous support.

By participating in this event through sponsorships, donations, or ticket purchases, you can directly contribute to making a difference in the lives of persons with disabilities and their families.

Your contribution will directly impact the lives of individuals and families in need, providing them with essential services and support in a safe and nurturing environment.

PROJECT COST €35,000

Project Details:

Reception Area

Welcoming and efficient reception space to greet clients warmly upon arrival.

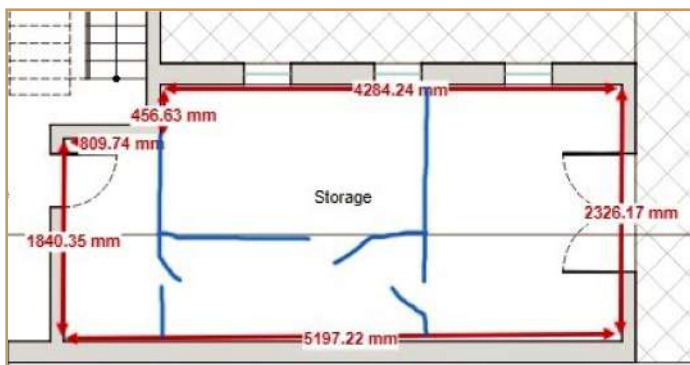


Proposed area for receptionist

Clinics Area

The proposed clinics area will feature designed spaces, ensuring utmost comfort and confidentiality for service users and their families.

Equipped with soundproof gypsum walls, white paint, and warm artificial lighting to create a calming ambiance.



Plan for clinics



Proposed area for Clinic 1 and Clinic 2

Child Assessment Room

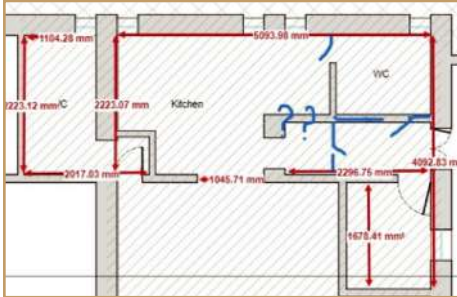
The proposed clinics area will feature designed spaces, ensuring utmost comfort and confidentiality for service users and their families.

Family Consultation Room

A versatile space for adult assessments and family therapy sessions, furnished with a round table and ample seating.

Office and Meeting Rooms

The office and meeting rooms will serve as the nerve centre for PATHFINDER Services, fostering collaboration among professionals and ensuring seamless service delivery.



Office and Meeting Room



Proposed area for Office and Meeting Room

First Room

Therapy room designed for intimate 1:1 sessions, featuring comfortable armchairs and a round carpet for a cozy atmosphere.

Second Room

Multi-functional space for adult assessments and intake meetings, furnished with an adult-sized table and chairs.

Main Office Space

Central hub for PATHFINDER Services staff, furnished with desks, chairs and storage units to support efficient workflow and collaboration.

Join us in making a difference in the lives of those seeking support and guidance through the Pathfinder Clinics. Your participation will not only contribute to the development of these vital spaces but also demonstrate your commitment to creating a more inclusive and supportive community.

TRANSFORMING LIVES, TOGETHER